

KIT's Institute of Meteorology and Climate Research (IMK)

Prof. Dr. Corinna Hoose, Dean of Studies



Figures and Facts about KIT – The Research University in the Helmholtz Association



28 Spinoffs and Startups

5 Campuses – **200** ha area

378 Professors and executive scientists

370 Trainees

23,321 Students

300 Buildings with a usable area of **478,000 m²**

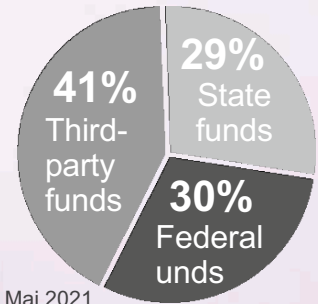
3,100 Doctoral students

50 Patent applications

9,618 Employees

1,284 international scientists

KIT budget 2020
EUR 967,7 million



Status: Mai 2021

KIT Excellent again! – Title Regained.

July 19, 2019: Success in the funding line „University of Excellence“ of the Excellence Strategy of the Federation and the Federal States

„The Research University in the Helmholtz Association – Living the Change“



Retrospect:

2006

Success in the first round of the Excellence Initiative of the Federation and the States

2009

Foundation of Karlsruhe Institute of Technology

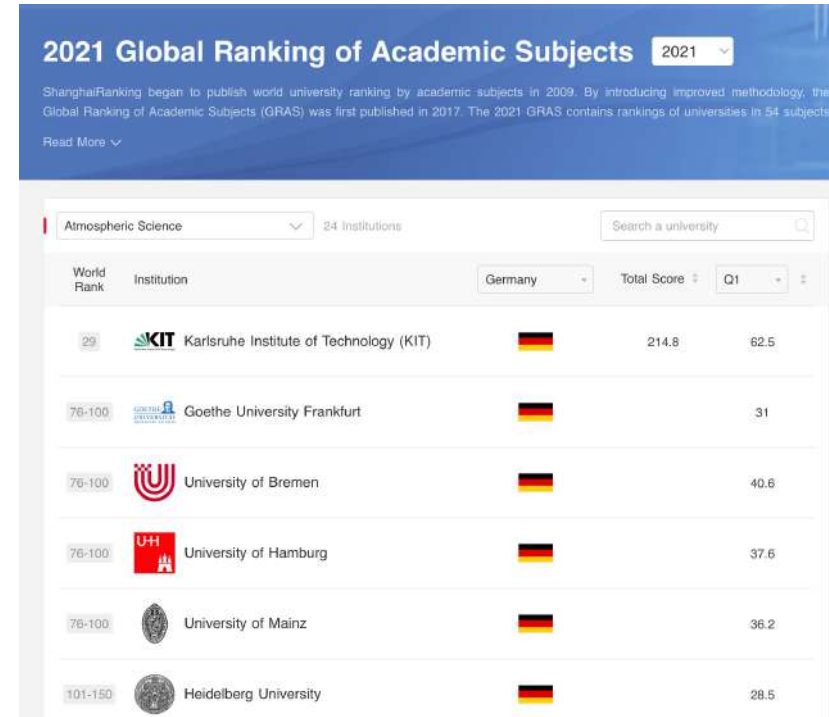


2012

Loss of excellence in the second round of the Excellence Initiative of the Federation and the States

Meteorology/Atmospheric Sciences at KIT

- IMK (Institute of Meteorology and Climate Research) is **the largest university research institution in Meteorology in Germany**
- 4 Departments
 - **IMK-TRO**: Troposphere Research
 - **IMK-ASF**: Atmospheric Trace Gases and Remote Sensing
 - **IMK-AAF**: Atmospheric Aerosol Research
 - **IMK-IFU**: Environmental Research
- In total ~350 employees
- KIT listed as top German university in the Shanghai Ranking of Academic Subjects for „Atmospheric Sciences“



<https://www.shanghairanking.com>

Locations of IMK



KIT Campus North: IMK-AAF,
IMK-TRO, IMK-ASF

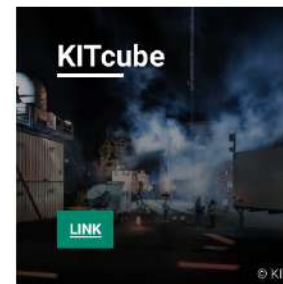
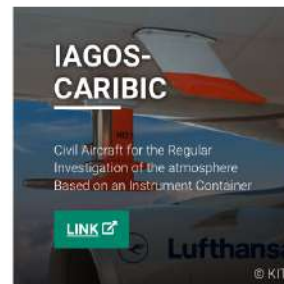
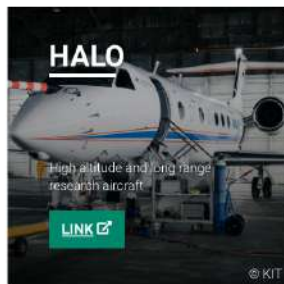
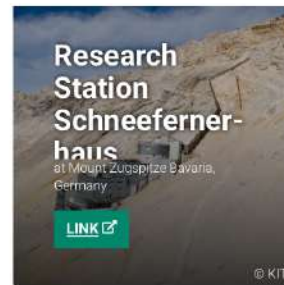


KIT Campus South: IMK-TRO



IMK-IFU: KIT Campus
Alpin, Garmisch-
Partenkirchen

IMK's large research infrastructures



<https://www.ce-atmochange.kit.edu>

Field Observations of IMK

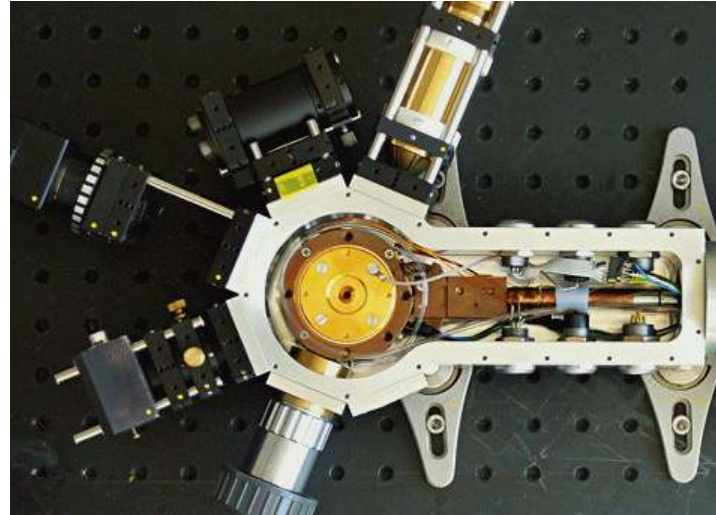
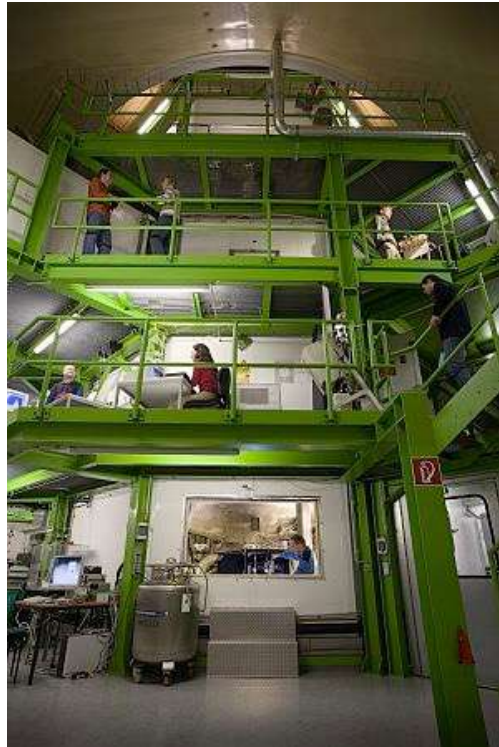


Quelle: www.imk-tro.kit.de, www.imk-aaf.kit.edu



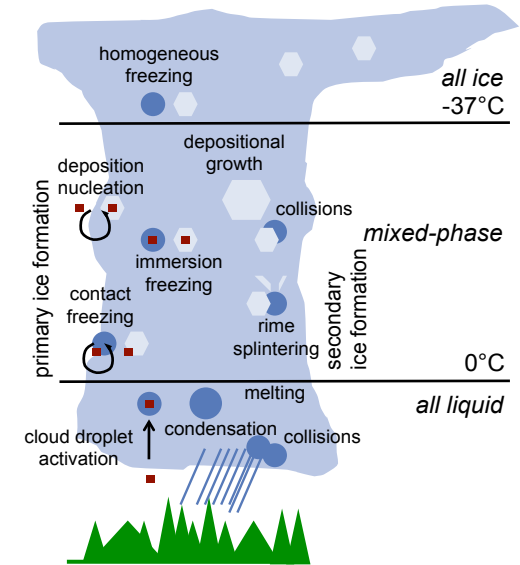
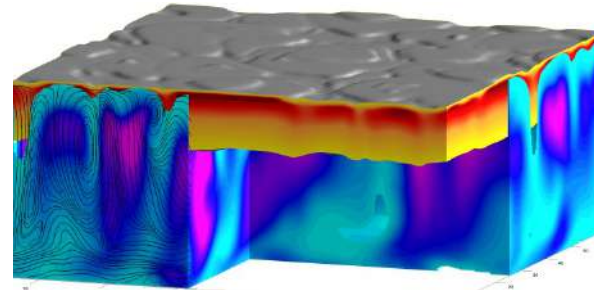
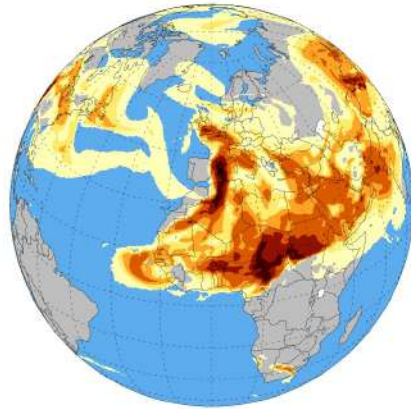
Swabian
MOSES
2021, siehe
www.atmohub.kit.edu

Laboratory measurements at IMK



Quelle: www.imk-aaf.kit.de

Modelling at IMK: ICON development partner



Projects and collaborations

- ATMOChange
- W2W
- VollImpact
- ERC Grants
- University of Leeds
- NCAR
- ...

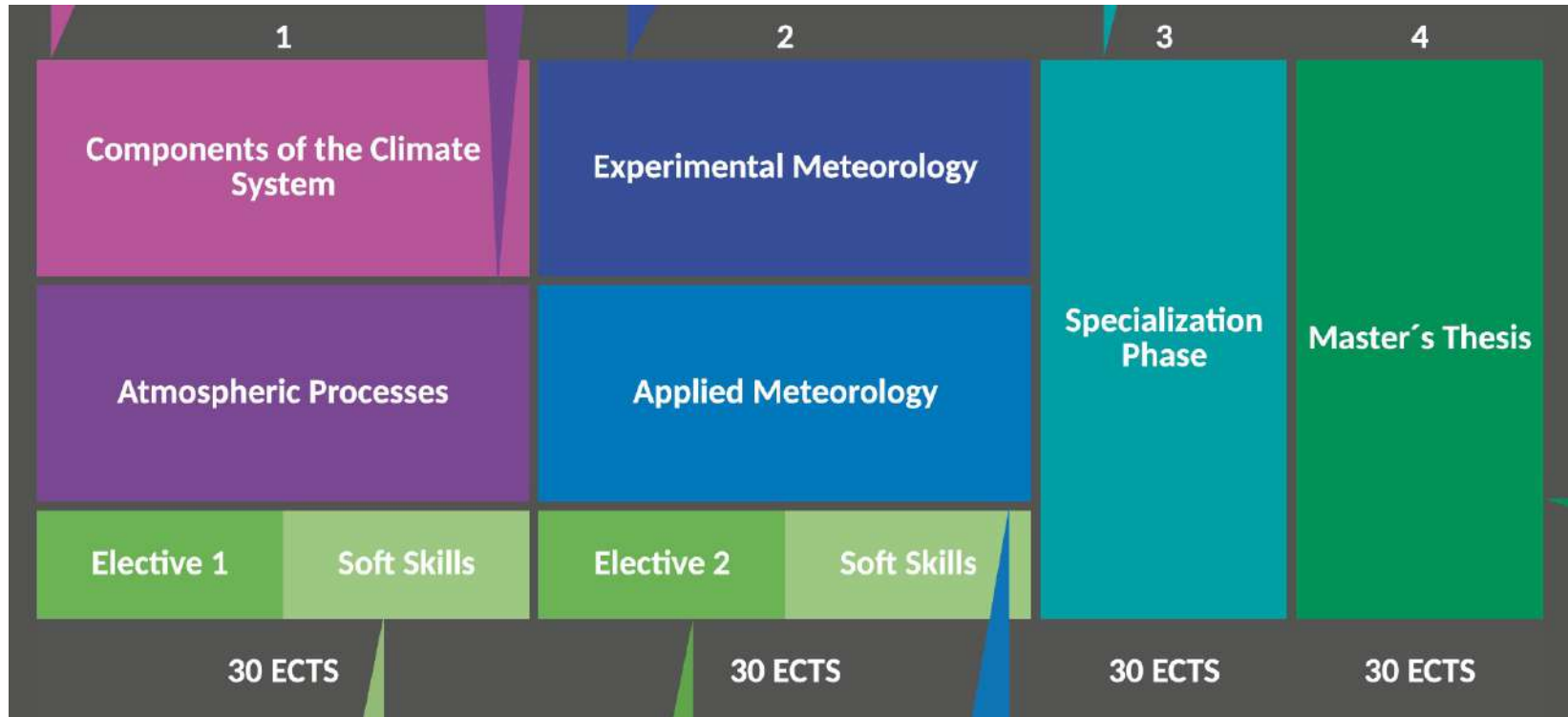


European Research Council
Established by the European Commission



Course Programme

MSc Meteorology and Climate Physics



Looking forward to hearing from you!



Dean of Teaching: **Prof. Corinna Hoose**

e-mail: corinna.hoose@kit.edu

Student Advisory **Prof. Andreas H. Fink:**

e-mail: andreas.fink@kit.edu

Student Advisory **Kathi Maurer:**

e-mail: kathi.maurer@kit.edu

<https://www.imk-tro.kit.edu/english/17.php>